

BENCHMARK


Insulating Concrete Forms



Building with **Benchmark Insulating Concrete Forms (ICF)** is a fast, simple, affordable way to offer homeowners better options for home safety, quietness and energy efficiency. When you choose Benchmark ICF, you receive a superior and versatile product from a Midwestern manufacturer with the only **On-Time Guarantee** in the industry. Benchmark ICF combines the best in quality, service and value for you and your customers.

 **BENCHMARK FOAM INC.**

Quick response is our guarantee.



Interlocking castellations

16" x 48" block available
in 4", 6", 8", 10" or 12" widths

Positive tongue &
groove interlocks

Hinging spacer ties
with rebar pockets

Continuous, concealed
attachment rails

BENCHMARK
Insulated Concrete Form
1-800-658-3444 or www.benchmarkicf.com
Meets or Exceeds ASTM C539 Specifications

EXCLUSIVE FEATURES OF BENCHMARK ICF

Fabrication marks every 2"
Attachment rail reference marks every 6"

*Benchmark ICF assembles quickly
and easily. It is perfect for professional
contractors or experienced
do-it-yourself builders.*



WHY BUILD WITH ICF?

FAST AND SIMPLE:

The interlocking blocks of Benchmark ICF build like no other concrete form, with minimum labor, training and equipment. Less exterior bracing is required, reducing finish time and cost. Exterior and interior finishing steps are also reduced.

COST EFFECTIVE:

With Benchmark ICF, contractors will reduce jobsite labor and material costs. Homeowners will benefit from lower utility costs.

VERSATILE:

Benchmark ICF is ideal for any building specifications. From basements to multistory apartments or single-family homes to warehouses, Benchmark ICF offers a great building technique. Benchmark ICF is adaptable to special wall shapes, accommodating ornate architectural demands. The high insulating value and thermal barrier of Benchmark ICF enables year-round construction and reduces construction delays due to temperature extremes.

ENERGY EFFICIENT:

The solid concrete wall construction of Benchmark ICF eliminates drafts associated with framed buildings, achieving energy savings for homeowners.

QUIET:

Benchmark ICF act as a sound barrier, reducing sound penetration by up to 50 percent.

SECURE:

Buildings constructed with Benchmark ICF are resistant to fire, violent winds and extreme elements. This technique can also be used to build above-grade safe rooms that are resistant to hurricanes and tornados.

Call Benchmark Foam toll free at 800-658-3444.

WHY CHOOSE BENCHMARK ICF?

ON-TIME GUARANTEE:

Benchmark Foam knows your business depends on our product arriving on time. Our service response is so dependable we back it up with Benchmark Foam's On-Time Guarantee. Your product will be shipped and arrive by the agreed-to arrival date or we will **discount your invoice 10 percent**. We work to accommodate customer needs, giving you confidence when you place an order, even if it needs to be rushed. And we do not have truckload quotas, so no matter how large or small, your order will be shipped on time.

QUALITY AND CONVENIENCE:

Benchmark Foam leads the industry in quality and has designed Benchmark ICF with builders in mind. Continuous attachment rails ensure stability during assembly and added strength to the project. Benchmark ICF have fabrication marks and attachment rail reference marks, making exterior and interior finishing much easier.

CHOICE:

Benchmark Foam has the ICF you need, whether you are pouring a basement or building a hotel. Benchmark ICF comes in 4, 6, 8, 10 or 12-inch concrete forms, accommodating worldwide codes for steel reinforcing. Benchmark Foam also stocks hardware for T's, 90 and 45 degree corners, and brickledges.

LITE-FORM TECHNOLOGIES' LIVING HINGE TIE:

Benchmark Foam uses Lite-Form Technologies' Living Hinge Tie in its Benchmark ICF. This patented hinge tie design cuts shipping and handling costs by 40 to 60 percent when compared to rigid ICF block systems. Blocks can be delivered by common carrier in high-density pallets. More than 7,000 square feet of Benchmark ICF wall forms can be shipped in a commercial van.

INDUSTRY LEADING STANDARDS:

Benchmark Foam has earned a reputation as an industry leader in ICF manufacturing. Finished walls with Benchmark ICF can attain an insulating value of R-23 and are resistant to winds of up to 250 mph.

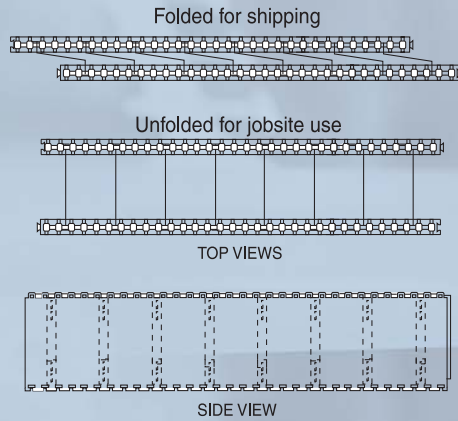
MIDWESTERN MANUFACTURER:

Benchmark Foam is a customer-focused Midwestern company, committed to giving you unbeatable service and building a long-term relationship with your business that will benefit your processes and your bottom line.

Benchmark ICF reduces the steps for exterior and interior finishes. Reference and fabrication marks make siding and drywall finishing fast and accurate. Masonry finishes and below-ground waterproofing applications are also applied directly to forms.



LIVING HINGE TECHNOLOGY:



To Determine Concrete Volumes (Cubic Yards)
 Height (ft.) x Length (ft.) x Thickness (in.)
 x .0031 = cu. yds

Form Wall Thickness

2" per side, continuous polystyrene

Fire Rating (Siliceous Aggregate) by Test. Concrete Wall Without Insulation

4" concrete wall; 1 hr.
 6" concrete wall; 3 hr.
 8" concrete wall; 4 hr.

STC (Sound Transmission Class)

8" concrete, forms and finish;
 STC 53 by calculation

EPS Insulation Properties

Type II Expanded Polystyrene per ASTM C578-04
 Complies with ASTM E-84 (flame spread and smoke development)

Form Widths for Concrete Wall Thickness of

4", 6", 8", 10", 12"

In-Wall Bracing Widths

4", 6", 8", 10", 12"

R-Values*

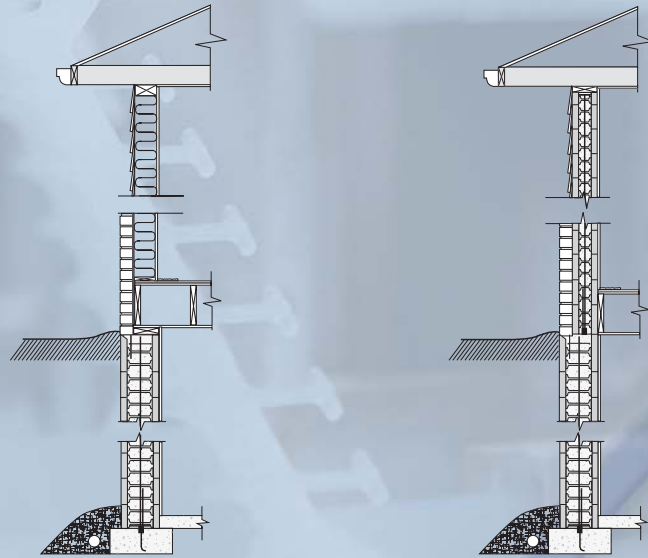
Insulating forms only
 R-16 at 75° F mean temperature
 R-18 at 25° F mean temperature
 Finished wall, by calculation
 R-20 at 75° F mean temperature
 R-23 at 25° F mean temperature

*note - Federal Trade Commission uses R-values determined at 75°F mean temperature for residential

SPECIFICATIONS:

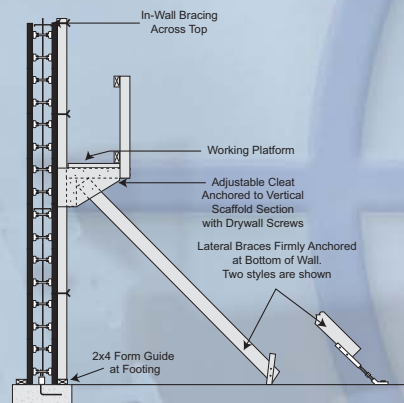
Installers and designers must comply with local building codes for monolithic reinforced concrete construction. If local codes are not available, structural design parameters are available from the ACI (American Concrete Institute) and the PCA (Portland Cement Association). Guidelines for the proper assembly, bracing and concrete placement for Benchmark ICF are available from Benchmark Foam Inc. and authorized Benchmark ICF suppliers.

In buildings where people normally work, reside or assemble, polystyrene concrete forms must be fully protected from the interior of the building by not less than 1/2" drywall or the approved fire-resistant equivalent. Installers must follow the finish manufacturer's instructions and warranty restrictions for all materials applied to wall forms.



Benchmark ICF basement and wood frame upper wall. Wood floor joists are used.

Benchmark ICF basement and upper wall with brick veneer and siding. Metal joist hangers are anchored to concrete wall.



Steel reinforcing not shown. Installer must follow approved reinforcing codes, which may vary from region to region.

BENCHMARK FOAM INC.

Quick response is our guarantee.

3200 9th Ave. SE • Watertown, SD 57201

Phone: 605-886-8084 • 800-658-3444 • Fax: 605-886-8099

www.BenchmarkFoam.com



Call today to see how our unique design capabilities can benefit you!