

# BENCHMARK

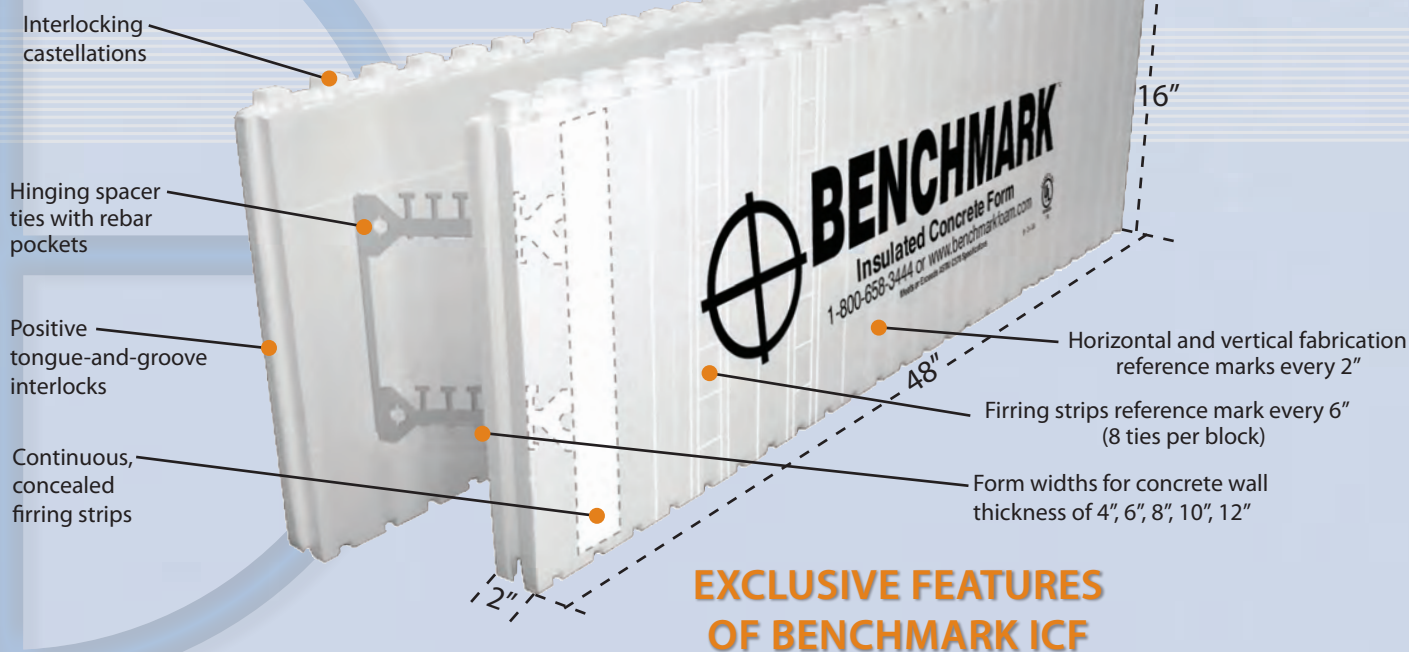
*Insulated Concrete Forms*



Building with **Benchmark Insulated Concrete Forms (ICF)** is a fast, simple, affordable way to offer homeowners better options for home safety, quiet comfort and energy efficiency. When you choose Benchmark ICF, you receive a superior and versatile product from a Midwestern manufacturer with the only **On-Time Guarantee** in the industry. Benchmark ICF combines the best in quality, service and value for you and your customers.

 **BENCHMARK FOAM INC.**

*Quick response is our guarantee.*



## WHY BUILD WITH ICF?

*Made of expanded polystyrene (EPS), ICFs are lightweight, energy efficient and easy to install.*

### FAST AND SIMPLE

- Reduce labor, training and equipment with interlocking blocks.
- Save time and money with less exterior bracing and finishing steps.

### COST EFFECTIVE

- Lower utility costs with two built-in layers of insulating foam.
- Eliminate the cost of purchasing and maintaining traditional forms.
- Cut labor costs with fast assembly and minimal teardown.

### VERSATILE

- Ideal for basements, warehouses, single-family homes and multi-story apartments.
- Adaptable to custom walls, accommodating ornate architectural demands.

### ENERGY EFFICIENT

- Lower energy costs by more than 30 percent with airtight ICFs.
- Save costs with 50 percent less air leakage than framed buildings.
- Save utility costs by downsizing heating and cooling units.
- Attain an R-23 insulating value.
- Qualifies for LEED green building points.

### QUIET AND SECURE

- Enjoy the peace of reduced exterior noise.
- Welcome the safety of knowing ICFs are mold and mildew resistant.
- Attain 30 percent stronger walls because EPS slows the curing process of concrete.





Call Benchmark Foam at 800-658-3444

or visit us online at [www.BenchmarkFoam.com](http://www.BenchmarkFoam.com)

## WHY CHOOSE BENCHMARK ICF?

### BUILD ON-BOND

- Reduce time spent on jobsite with building on-bond rather than staggered.
- Simplify installation with our on-bond option, exclusive to Benchmark ICF.

### FULL HORIZONTAL INTERLOCK

- No shifting or leaking during concrete pour with tongue and groove interlock.
- Tight-fitting castellations ensure system stability.
- Eliminate unnecessary block locks, hooks, zip ties or adhesives that other brands require.

### INSTALLATION CONVENIENCE

- Ensure stability and strength during assembly with continuous furring strips.
- Fabrication and reference marks make exterior and interior finishing easier.

### VARIABLE SIZES AND ACCESSORIES

- Available in 4, 6, 8, 10, or 12-inch concrete forms.
- Accommodates worldwide codes for steel reinforcing.
- Accessories available for T's, 90 and 45 degree corners and brickledges.

### LIVING HINGE TIE TECHNOLOGY:

- Patented design by Lite Form Technologies allows form to fold when shipped, cutting shipping costs by up to 60 percent when compared to rigid ICF block systems.

### FLEXIBLE RELATIONSHIPS

- No matter the size, we deliver to any jobsite.
- No truckload quotas allows delivery to individual, specific jobsites.
- Discounts are available to those who stock Benchmark ICFs.

### INVENTORY CONTROL

- Simplify with fewer pieces to ship and less SKUs to control.

### MIDWESTERN MANUFACTURER

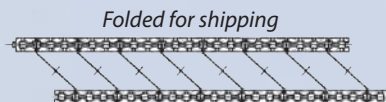
- Customer-focused company committed to giving unbeatable service.
- Guaranteed timely delivery.
- Reduced shipping costs.
- Serving a regional area means short shipments which reduce environmental impact caused by long-haul trucking.



### ON-TIME GUARANTEE

Benchmark Foam knows your business depends on our product arriving on time. Our service response is so dependable we back it with our On-Time Guarantee. Your product will be shipped and arrive on the agreed-to arrival date or we will **discount your invoice 10 percent**. We work to accommodate customer needs, giving you confidence when you place an order, even if it needs to be rushed. And we do not have truckload quotas, so no matter how large or small, your order will ship on time.

## LIVING HINGE TIE TECHNOLOGY



### TOP VIEWS

*Unfolded for jobsite use*



## CODE COMPLIANCE:

Installers and designers must comply with local building codes for monolithic reinforced concrete construction. If local codes are not available, structural design parameters are available from the ACI (American Concrete Institute) and the PCA (Portland Cement Association). Guidelines for the proper assembly, bracing and concrete placement for Benchmark ICF are available from Benchmark Foam, Inc. and authorized Benchmark ICF suppliers.

In buildings where people normally work, reside or assemble, polystyrene concrete forms must be fully protected from the interior of the building by not less than 1/2" drywall or the approved fire-resistant equivalent. Installers must follow the finish manufacturer's instructions and warranty restrictions for all materials applied to wall forms.

## To Determine Concrete Volumes (cubic yards)

Height(ft.) x Length(ft.) x Thickness(in.) x .0031 = cubic yards

## Form Wall Thickness

2" per side, continuous polystyrene

## Fire Rating (Siliceous Aggregate) by test.

Concrete wall without insulation

4" concrete wall; 1 hour

6" concrete wall; 3 hours

8" concrete wall; 4 hours

## STC (Sounds Transmission Class)

8" concrete, forms and finish;

STC 53 by calculation

## EPS Insulation Properties

Type II Expanded Polystyrene per ASTM C578-08b complies with ASTM E-84 Test Method (flame spread and smoke development)

## In-Wall Bracing Widths:

4", 6", 8", 10", 12"

## R-Values\*

*Insulated forms only*

R-16 at 75°F mean temperature

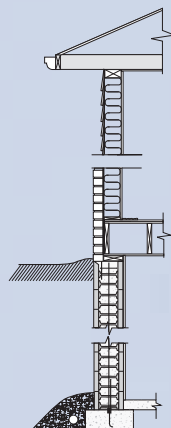
R-18 at 25°F mean temperature

*Finished wall, by calculation*

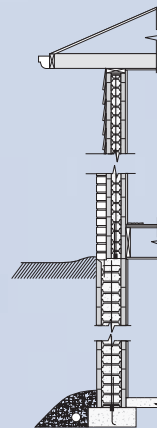
R-20 at 75°F mean temperature

R-23 at 25°F mean temperature

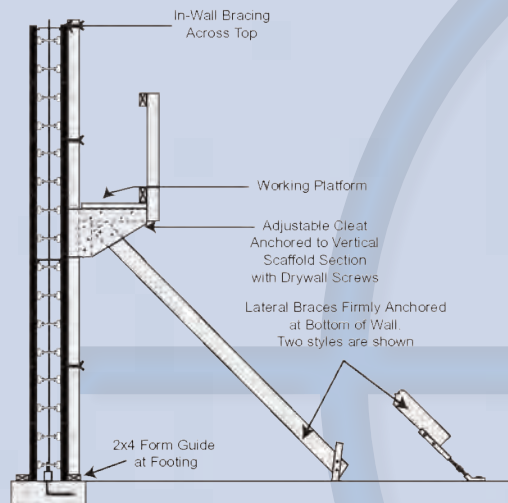
\* Federal Trade Commission uses R-Values determined at 75°F mean temperature for residential



Benchmark ICF basement and wood frame upper wall. Wood floor joists are used.



Benchmark ICF basement and upper wall with brick veneer and siding. Metal joist hangers are anchored to concrete wall.



Steel reinforcing not shown. Installer must follow approved reinforcing codes, which may vary from region to region.

**Call today to learn how our unique design capabilities can benefit you!**

**BENCHMARK FOAM INC.**

*Quick response is our guarantee.*

401 Pheasant Ridge Drive  
Watertown, SD 57201

Phone: 605-886-8084 • 800-658-3444

Fax: 605-886-8099

[www.BenchmarkFoam.com](http://www.BenchmarkFoam.com)

